

OHA Behaviour for Learning

Vision:

OHA will provide an inspirational and ambitious learning journey to allow all students to achieve beyond their Horizon.

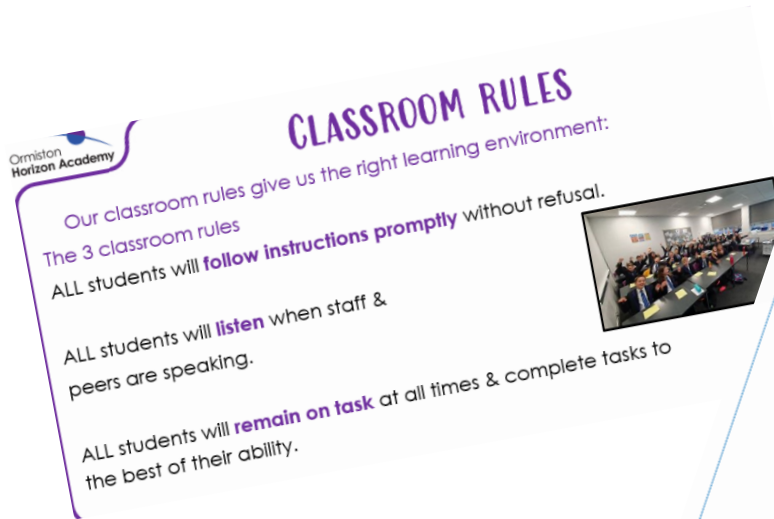
What does an OHA student look like?

As an OHA-er, I am: an ambitious, hardworking student who gives 100% to every challenge I undertake.

Our Behaviour Improvement Journey

1. Consistency of application
2. Student defiance

Our current expectations



- ✓ Thrive
- ✓ PALP
- ✓ Developed systems in reflect/IE

OHA Behaviour Ladder

NAME

(Warning)

X

(Warning)

B1

(10 minute detention)

B2

(20 minute detention)

B3

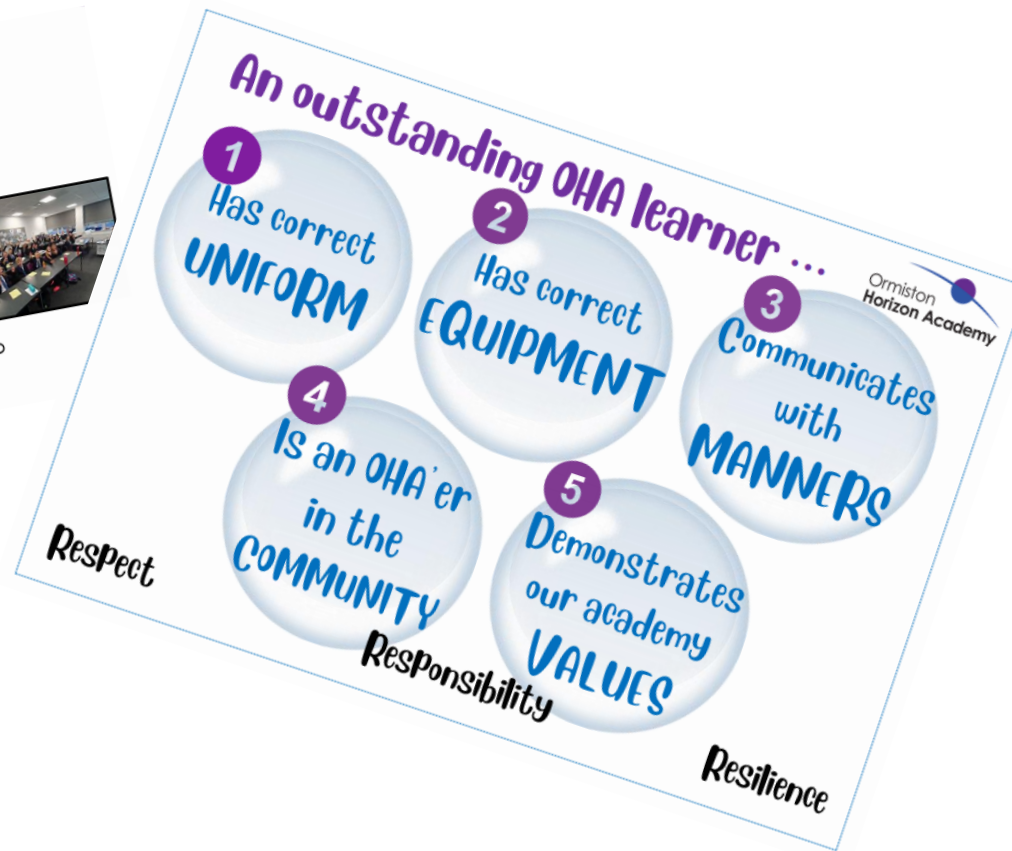
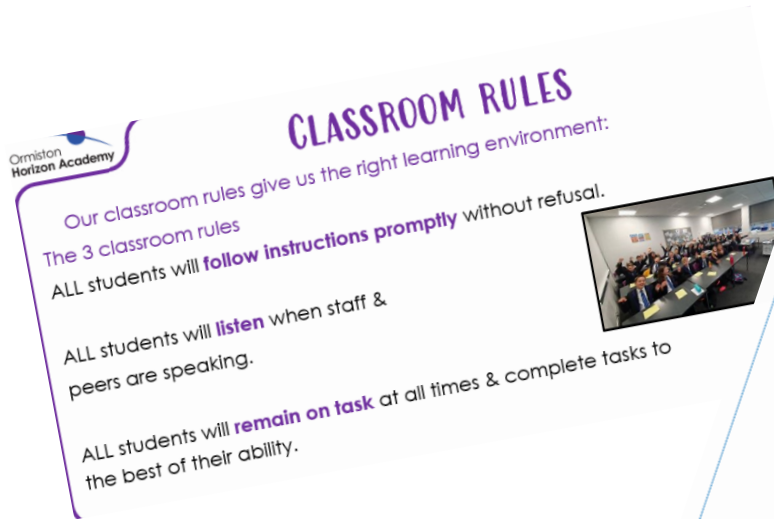
(Exit Room + 30 minute detention)

Teachers have the right to teach,
students have the right to learn

For the 90%, what is going to
change?

For the 10%, what is going to
change?

Our current expectations



- ✓ Thrive
- ✓ PALP
- ✓ Developed systems in reflect/IE

OHA Behaviour Ladder

NAME

(Warning)

X

(Warning)

B1

(10 minute detention)

B2

(20 minute detention)

B3

(Exit Room + 30 minute detention)

Our updated expectations

Academy Values:

- Resilience
- Respect
- Responsibility

OHA Expectations

At OHA all students show
Resilience by:

- ✓ Focusing on learning
- ✓ Completing work to the best of their ability
- ✓ Never giving up



OHA Expectations

At OHA all students show
Respect by:

- ✓ Using manners
(Sir/Miss/Please/Thank
you)
- ✓ Following instructions
- ✓ Being kind to others
- ✓ Responding
appropriately when
spoken to



OHA Expectations



At OHA all students show **Responsibility** by:

- ✓ Managing themselves appropriately
 - Equipment
 - Toilet use
 - Behaviour
 - Uniform
 - Punctuality
- ✓ Keeping our school community clean and tidy and maintaining our OHA standards
- ✓ By focusing on their own learning and not getting involved on another students' behaviour

For the 10%, what happens
when they follow those
expectations?

In class

- Name
- B1 (3 on register)
- B2 (20minute detention)
- B3- Classroom removal to an exit room and a 30minute detention
- B4- Failed exit room (Reflect)

Register number

- ✓ 1 – Consistently goes above and beyond expectations (reward points)
- ✓ 2 – Meets the classroom expectations (Reward points)
- ✓ 3 – Has not met expectations (B1/2)
- ✓ 4 – Has not met expectations and has been transferred to an Exit room

Detention System

OHA'ers who are due in detention...

- ✓ Have a detention the following day with NO exception
- ✓ Any B2 is a detention of 20 minutes
- ✓ Any B3 is a detention of 30 minutes
- ✓ Note: Detention will run every day including Wednesdays for up to 1 hour after school

Detention System

Yellow Detention (below 1hr)

- ✓ A B2 detention is 20mins
- ✓ A B3 detention is 30mins

-
- ✓ Failure to attend a yellow detention raises to Red 1 hour.

Red Detention (1hr)

- ✓ 3x B2 detention is Red
- ✓ 2x B3 detention is Red

-
- ✓ Failure to attend a Red detention raises to a day in isolation + Red 1 hour detention.

What do we need from you as parents/carers?

At OHA we are: On time and ready to learn

Late to the academy

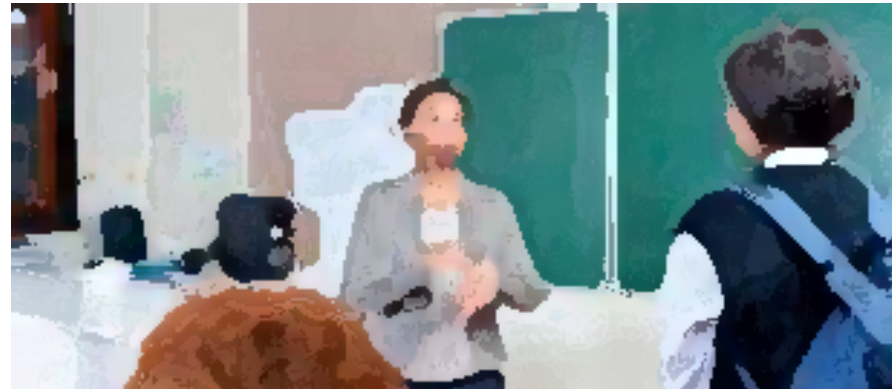
- If a student is late to the academy they receive a **B2 detention (20 min detention)**

Equipment



Late to lesson

- Name warning given by the member of staff
- You will be placed on report if you are persistently late to class
- If you truant class you may be placed in reflect
- **Corridor staff will issue B2/B3 detentions for students who are persistently making a choice to not go directly to lesson**



Reflect
Internal Exclusion
PALP/Suspension

Consistency

Reflect

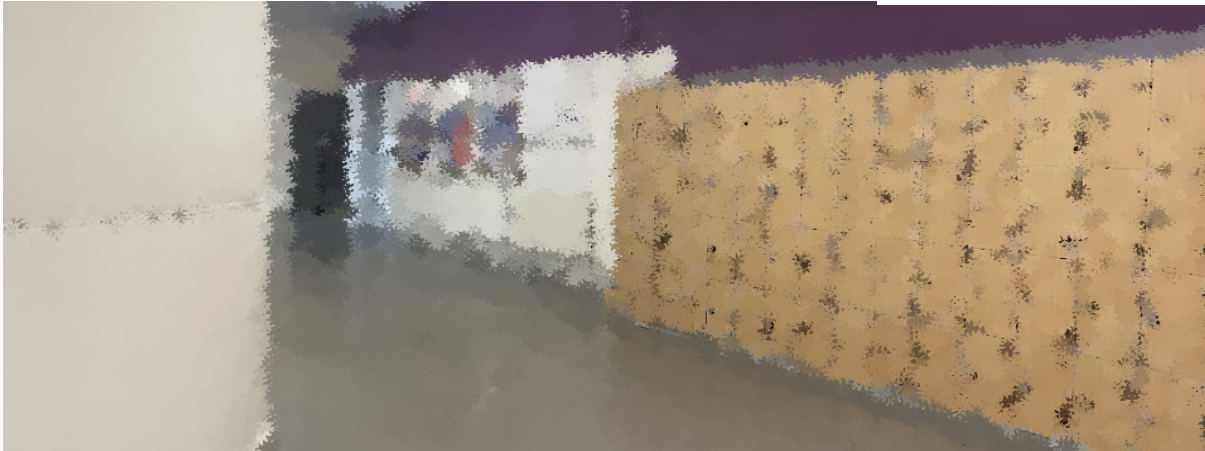
Students will complete a minimum of 3 periods plus a 30minute detention if they...

Resilience

- ✓ Refusing to attend a lesson
- ✓ Refusing to attend an Exit Room
- ✓ Disturb the learning of others whilst in an Exit Room

Respect

- ✓ Using offensive language
- ✓ Walking away from a member of staff
- ✓ Are involved in a prejudice incident



Responsibility

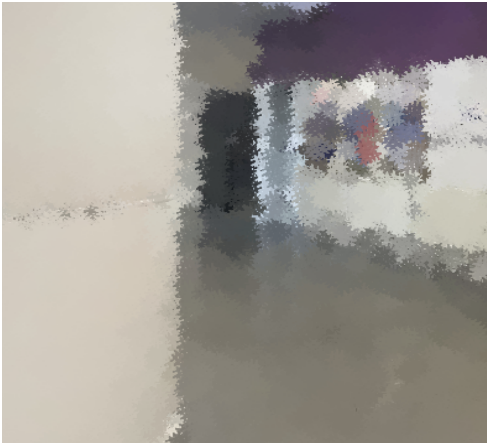
- ✓ Are inappropriate/ Dangerous on corridor/lunch
- ✓ Are not in appropriate academy uniform
- ✓ Have an accumulation of 3 Exit Rooms in one day
- ✓ Repeatedly refusal to follow instructions
- ✓ Fail to attend a red detention (isolated until the detention is completed)

Internal Exclusion (IE)

Students will complete a minimum of 5 periods in IE plus a 30minute detention if they are...

Resilience

- ✓ Disturbing the learning of others while in Reflect
- ✓ Refusing to attend Reflect



Respect

- ✓ Using offensive language towards a member of staff
- ✓ Continued walking away from staff
- ✓ Instigating a prejudice incident
- ✓ Aggressive behaviour towards another student
- ✓ Inappropriate behaviour in the community

Responsibility

- ✓ Damaging academy property
- ✓ Smoking/vaping within the community
- ✓ Inappropriate use of technology
- ✓ Dangerous corridor behaviour

PALP/Suspension

Students who refuse/fail IE will repeat this time following PALP/Suspension

Resilience

- ✓ Disturbing the learning of others while in IE
- ✓ Refusing to attend IE



Respect

- ✓ Physical assault against an adult/student
- ✓ Verbal abuse/threatening behaviour towards an adult
- ✓ Severe/repeated instigation of prejudice incident

Responsibility

- ✓ Smoking/vaping on site
- ✓ Drug/Alcohol incident
- ✓ Threat/use of offensive weapon/item
- ✓ Severe/repeated inappropriate use of technology
- ✓ Persistent disruptive behaviour/refusal

What do we need from you as parents/carers?

Learning Intervention Centre

What have we done so far?

- Staff Training
- Student Feedback
- Parental Information
- Feedback Week
- Resources – Website

Questions